



CALYPSO STRAIN GUIDE

CALYPSOERIE.COM

Calypso Premium Strains

From classic cultivars like Afghani to new proprietary strains like Calypso Kush, our premium flower offers a range of therapeutic effects and sensory experiences. These products specifically include the largest and densest flower from our harvests, which are then uniquely packaged to prolong freshness and preserve potency, taste, and smell.

HOW CRUISE IS YOUR CHILL?

Rather than use a plant's heritage to predict its effects, we examine its specific cannabinoid and terpene profiles. From these examinations, we sort our products into one of three varieties: Chill, Cruise, or Charge. This helps to better describe the product's effects and can make it easier to find a product that's right for you.

This scale illustrates the relative effects that most often accompany Calypso's premium strains.



[CALYPSOERIE.COM](https://calypsoerie.com)





Afghani

Afghani is an ancient landrace strain that has grown wild under the mountain peaks of Afghanistan for centuries; preserving its nearly pure Indica genetics and properties. This strain is prized for its high resin content which gives it a sweet, earthy scent with a touch of bright lemon zest, while its flavor introduces notes of wildflowers and herbs. Afghanis can deliver deep relaxation and euphoria that rolls over your body like gentle waves, making it excellent for nighttime use.

.....
CHILL

MORE CALMING EFFECTS

FEELINGS

- Relaxed
- Sleepy
- Calm
- Happy
- Euphoric

AILMENTS

- Stress
- Pain
- Insomnia
- Anxiety
- Depression

TERPENES

- Myrcene
- Linalool
- Caryophyllene

Afghani can deliver deep relaxation and euphoria that rolls over your body like gentle waves.



LEARN MORE AT [CALYPSOERIE.COM](https://calypsoerie.com)





Alien Rift

Alien Rift is dense with trichomes and features a citrusy, floral sweetness—like a blooming lemon tree—in both aroma and flavor. Thanks to high levels of myrcene, its effects are mostly calming for both the body and mind. Alien Rift is recommended for evening use to help soothe racing or negative thoughts, ease pain, and usher in restful sleep for relief that's out of this world!

.....
CHILL

MORE CALMING EFFECTS

FEELINGS

- Calm
- Euphoric
- Happy
- Relaxed
- Sleepy

AILMENTS

- Anxiety
- Depression
- Insomnia
- Pain
- Stress

TERPENES

- Myrcene
- Limonene
- a-Pinene

Thanks to high levels of myrcene, its effects are mostly calming



LEARN MORE AT [CALYPSOERIE.COM](https://calypsoerie.com)





Arise

Perfect for some morning inspiration or simply cruising through your day, Arise offers a beautiful balance of calming and energizing effects. It can bring you gentle body euphoria, while keeping your mind clear and active. Its aroma is sweet and tropical with subtle notes of musk and pine. This aroma carries into its flavor, which might remind you of Juicy Fruit chewing gum. Lift your spirits and melt your pain away with this sweet, tropical strain.

.....
CRUISE

BALANCE OF CALMING & ENERGIZING EFFECTS

FEELINGS

- Happy
- Calm
- Uplifted
- Euphoric
- Creative

AILMENTS

- Stress
- Pain
- Fatigue
- Anxiety
- Depression

TERPENES

- Myrcene
- Alpha-Pinene
- Limonene

Arise brings gentle body euphoria, while keeping your mind clear and active.



LEARN MORE AT [CALYPSOERIE.COM](https://calypsoerie.com)





Axe Berry

Rock on with Axe Berry, a wonderfully balanced strain featuring a spicy, yet sweet aroma and flavor. As its name suggests, Axe Berry contains strong notes of juicy, ripe fruits along with undertones of fresh cracked pepper. With slow and steady dosing, its effects can be well-balanced to help loosen muscles and other pain points as well as ease the mind with positive, light thoughts. As a hybrid strain, you may choose to use Axe Berry in the daytime or while relaxing in the evening, either way, be sure to listen to some tunes while you do!

.....
CRUISE

BALANCE OF CALMING & ENERGIZING EFFECTS

FEELINGS

- Calm
- Creative
- Euphoric
- Happy
- Relaxed

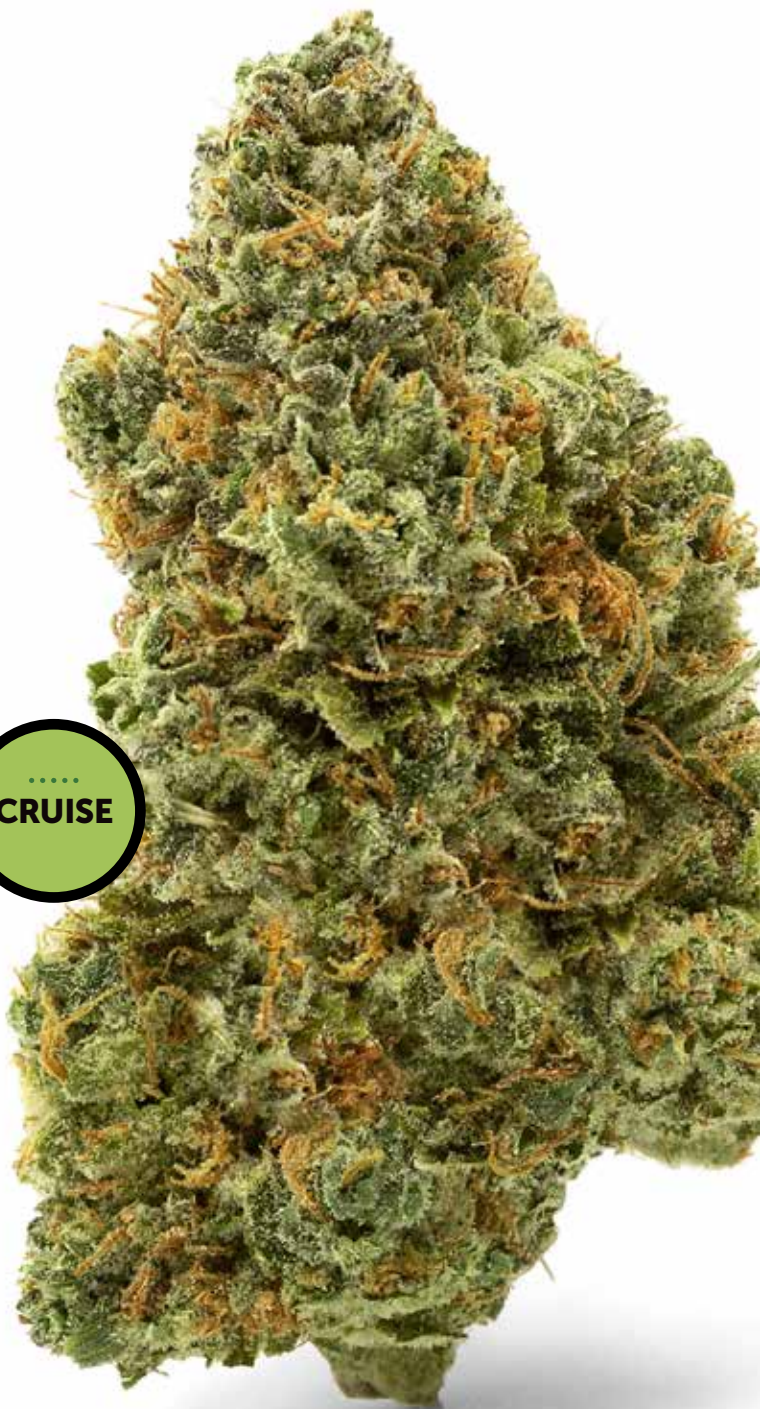
AILMENTS

- Anxiety
- Depression
- Insomnia
- Pain
- Stress

TERPENES

- Limonene
- Linalool
- Caryophyllene

Axe Berry helps loosen muscles and other pain points



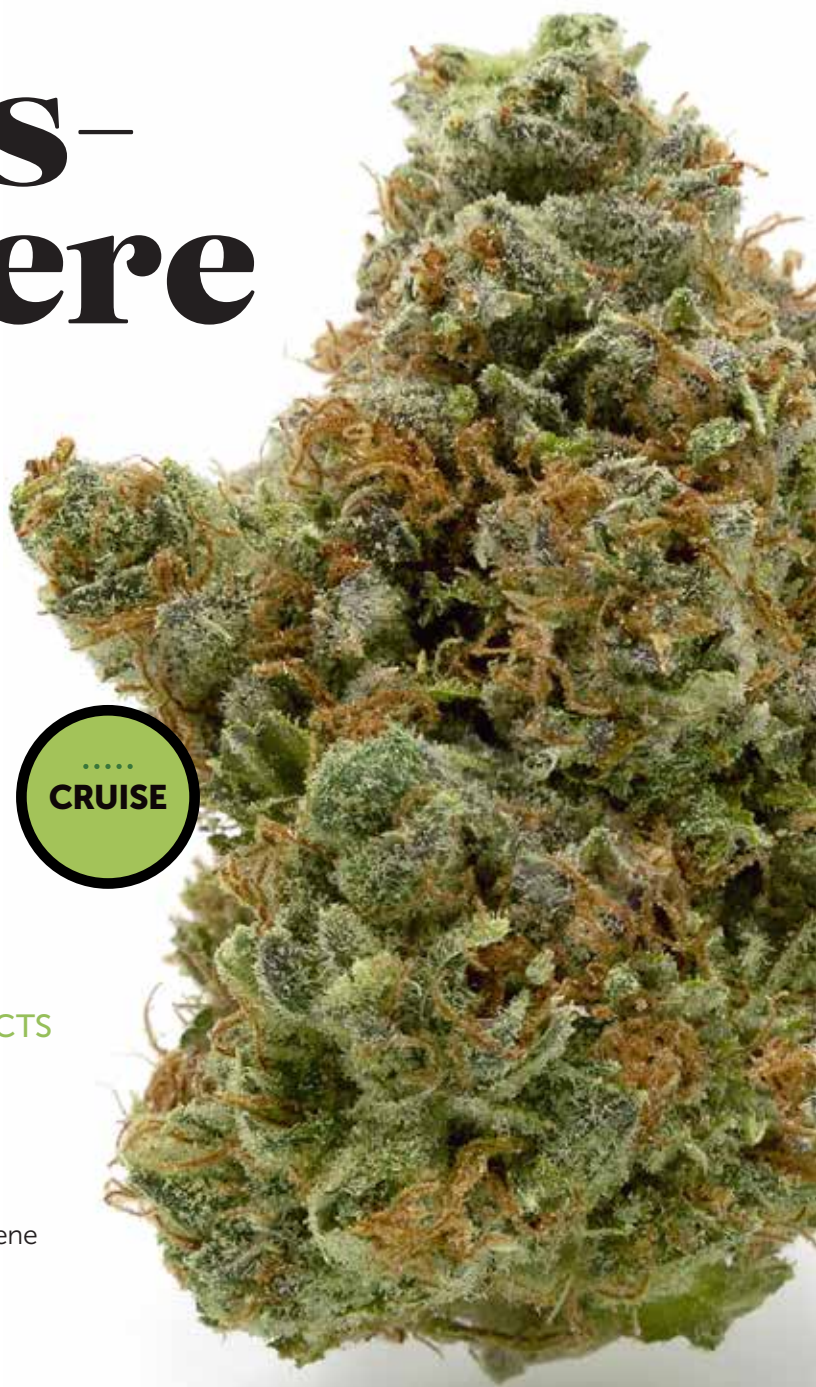
LEARN MORE AT [CALYPSOERIE.COM](https://calypsoerie.com)





Axemos- phere

Axemosphere is nearly out-of-this-world with its pungent aroma, savory flavor and balanced effects. Pronounced axe-muh-sfeer, this strain features notes of fresh, sweet citrus along with sharp pepper and floral-like musk. Axemosphere can help ease your mind from the worries of the day, as well as relax your body from head to toe. Day or night, allow this strain's euphoria to transport you into a fun and unique space, like zero-gravity weightlessness.



BALANCE OF CALMING & ENERGIZING EFFECTS

FEELINGS

- Calm
- Creative
- Euphoric
- Happy
- Relaxed

AILMENTS

- Anxiety
- Depression
- Insomnia
- Pain
- Stress

TERPENES

- Limonene
- Linalool
- Caryophyllene

Notes of fresh, sweet citrus along with sharp pepper and floral-like musk



LEARN MORE AT [CALYPSOERIE.COM](https://calypsoerie.com)





Axilla

Axilla is a rare and beautiful strain. Both its smell and taste is sweet (almost candy-like) with hints of fruit and spice. It offers potent euphoria; first bringing calming effects to the mind, then throughout the body to knockout aches and pains. You may also experience "a case of the giggles" fueled by silly or creative thoughts. This laughter soon gives way to deep and relaxing sleep, making Axilla best for evening use.

.....
CRUISE

BALANCE OF CALMING & ENERGIZING EFFECTS

FEELINGS

- Calm
- Creative
- Euphoric
- Happy
- Relaxed

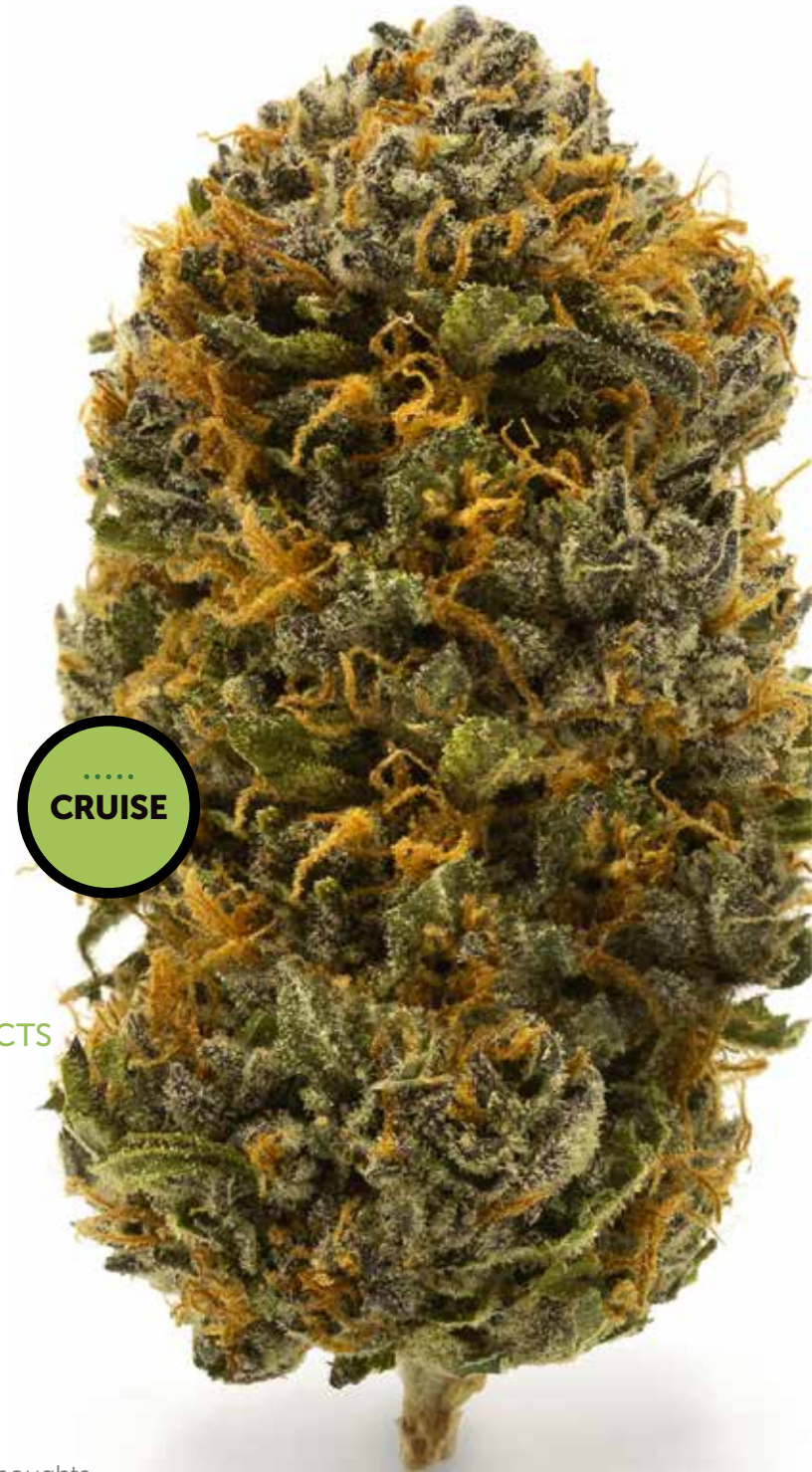
AILMENTS

- Anxiety
- Depression
- Insomnia
- Pain
- Stress

TERPENES

- Limonene
- Linalool
- Myrcene

Axilla brings on laughter fueled by silly or creative thoughts.



LEARN MORE AT [CALYPSOERIE.COM](https://calypsoerie.com)





Bubba Kush

Bubba Kush is a rich, Indica-dominant strain, famous for its unique calming effects. Its refined aroma has just a hint of coffee and cocoa, while its taste is earthy and nutty with a subtle sweetness. As this strain's effects kick in, users experience a tranquil body-melting sensation that remains mild enough to keep them up and active. This makes Bubba Kush a superb choice for daytime or nighttime use – providing you with relief, as you need it.

.....
CRUISE

BALANCE OF CALMING & ENERGIZING EFFECTS

FEELINGS

- Happy
- Calm
- Uplifted
- Euphoric
- Creative

AILMENTS

- Stress
- Pain
- Insomnia
- Anxiety
- Depression

TERPENES

- Caryophyllene
- Nerolidol
- Limonene

Bubba Kush is a rich, Indica-dominant strain, famous for its unique calming effects.



LEARN MORE AT [CALYPSOERIE.COM](https://calypsoerie.com)





Calypso Kush

Calypso Kush is an exceptional combination of the ancient landrace strain, Afghani and the potent hybrid strain, Chem Dawg. It has a complex scent of earth and musk with fruity undertones that carry into its tangy taste. With strong levels of myrcene, Calypso Kush produces a powerful, calming sensation while loosening the body and releasing tension in muscles and joints. Calypso Kush is ideal for your restful afternoons or getting a peaceful night's sleep.

.....
CHILL



MORE CALMING EFFECTS

FEELINGS

- Relaxed
- Sleepy
- Calm
- Happy
- Euphoric

AILMENTS

- Stress
- Pain
- Insomnia
- Anxiety
- Depression

TERPENES

- Myrcene
- Pinene
- Caryophyllene

Calypso Kush produces a powerful, calming sensation while loosening the body.



LEARN MORE AT [CALYPSOERIE.COM](https://calypsoerie.com)





Castle Rock Cherries

Castle Rock Cherries is bold and beautiful, presenting notes of sweet cherries along with bright citrus and pepper. Its calming effects help relax the body and uplift the mind for a gentle, full-body relief experience. Though this hybrid strain may have mostly indica-leaning effects, Castle Rock Cherries can provide potent body relaxation without mental fatigue. In fact, it may provide you with focus and clarity—ideal for relief any time of day.

.....
CRUISE

BALANCE OF CALMING & ENERGIZING EFFECTS

FEELINGS

- Calm
- Creative
- Euphoric
- Happy
- Relaxed

AILMENTS

- Anxiety
- Depression
- Insomnia
- Pain
- Stress

TERPENES

- Caryophyllene
- Myrcene
- Limonene

Its calming effects help relax the body and uplift the mind



LEARN MORE AT [CALYPSOERIE.COM](https://calypsoerie.com)





Cheese-wreck

This refined, Sativa-dominant strain comes from a family of plants known for their complex scents and savory tastes. This strain's pungent aroma and flavor is a pleasant combination of dried fruit and creamy cheese. As a mood-enhancer, Cheesewreck provides users with energy, sparks of creativity, and a sense of physical relaxation without any sedative effects. This can make Cheesewreck a great choice for when you need to be active and productive.



MORE ENERGIZING EFFECTS

FEELINGS

- Happy
- Energetic
- Uplifted
- Euphoric
- Focused

AILMENTS

- Stress
- Pain
- Fatigue
- Anxiety
- Depression

TERPENES

- Caryophyllene
- Limonene
- Nerolidol

Cheesewreck provides users with energy, sparks of creativity, and a sense of physical relaxation.



LEARN MORE AT [CALYPSOERIE.COM](https://calypsoerie.com)





Chem Dawg

As a hybrid, Chem Dawg is famous for its potency, balance, and versatility; making it one of the most popular strains for patients and breeders alike. This strain's aroma is pungent with notes of earth and pine, while its flavor is notably tangy. Whether you need it for a productive afternoon, a lively night with friends, or some well-deserved "me" time, Chem Dawg's mellow body relaxation, paired with its energetic and thought-provoking effects, can make it a great fit for a variety of uses.

.....
CHARGE

MORE ENERGIZING EFFECTS

FEELINGS

- Happy
- Energetic
- Uplifted
- Euphoric
- Focused

AILMENTS

- Stress
- Pain
- Fatigue
- Anxiety
- Depression

TERPENES

- Limonene
- Myrcene
- Caryophyllene

As a hybrid, Chem Dawg is famous for its potency, balance, and versatility.



LEARN MORE AT [CALYPSOERIE.COM](https://calypsoerie.com)





Chill Cherries

Do you ever wish you could simply slow down and smell the cherries? Chill Cherries, emphasis on the CHILL, offers this blissful experience. This hybrid strain features pungent notes of fermented fruit mixed with an earthy musk. Its effects are primarily indica-leaning, helping to relax both your body and mind, while also easing pain due to its high myrcene content. With mostly calming effects, Chill Cherries may be best used in the evening or at bedtime for a good night's sleep.

.....
CHILL

MORE CALMING EFFECTS

FEELINGS

- Calm
- Euphoric
- Happy
- Relaxed
- Sleepy

AILMENTS

- Anxiety
- Depression
- Insomnia
- Pain
- Stress

TERPENES

- Myrcene
- α-Pinene
- Caryophyllene

Relax body and mind, while also easing pain due to its high myrcene content



LEARN MORE AT [CALYPSOERIE.COM](https://calypsoerie.com)





Cinderella 99

Named after the princess with humble beginnings, Cinderella 99 features a sensory profile packed with bright citrus and sweet, tropical fruit. Its effects are legendary, dare we say, magical, thanks to years of cultivators refining its genetics. Cinderella 99 can provide dreamy body euphoria, followed by energetic waves of creativity. Its relief is long-lasting and best enjoyed in the daytime, or whenever you need a positive boost.

.....
CRUISE

BALANCE OF CALMING & ENERGIZING EFFECTS

FEELINGS

- Happy
- Calm
- Uplifted
- Euphoric
- Creative

AILMENTS

- Stress
- Pain
- Fatigue
- Anxiety
- Depression

TERPENES

- Limonene
- Myrcene
- Caryophyllene

Cinderella 99 provides dreamy body euphoria, then energetic waves of creativity.



LEARN MORE AT [CALYPSOERIE.COM](https://calypsoerie.com)



Coco Bomb Kush



Coco Bomb Kush has noteworthy Indica-dominant genetics and properties, making it an explosively relaxing strain. Its musky, earthy scent gives into a citrusy and tangy flavor, sprinkled with subtle notes of chocolate. As this strain's effects kick in, users experience a cerebral buzz that tapers into a dreamy state of mind, followed by a powerful body high. Perfect for quiet mornings or restful afternoons, Coco Bomb Kush offers pure relaxation any time of day.

.....
CRUISE

BALANCE OF CALMING & ENERGIZING EFFECTS

FEELINGS

- Happy
- Calm
- Uplifted
- Euphoric
- Creative

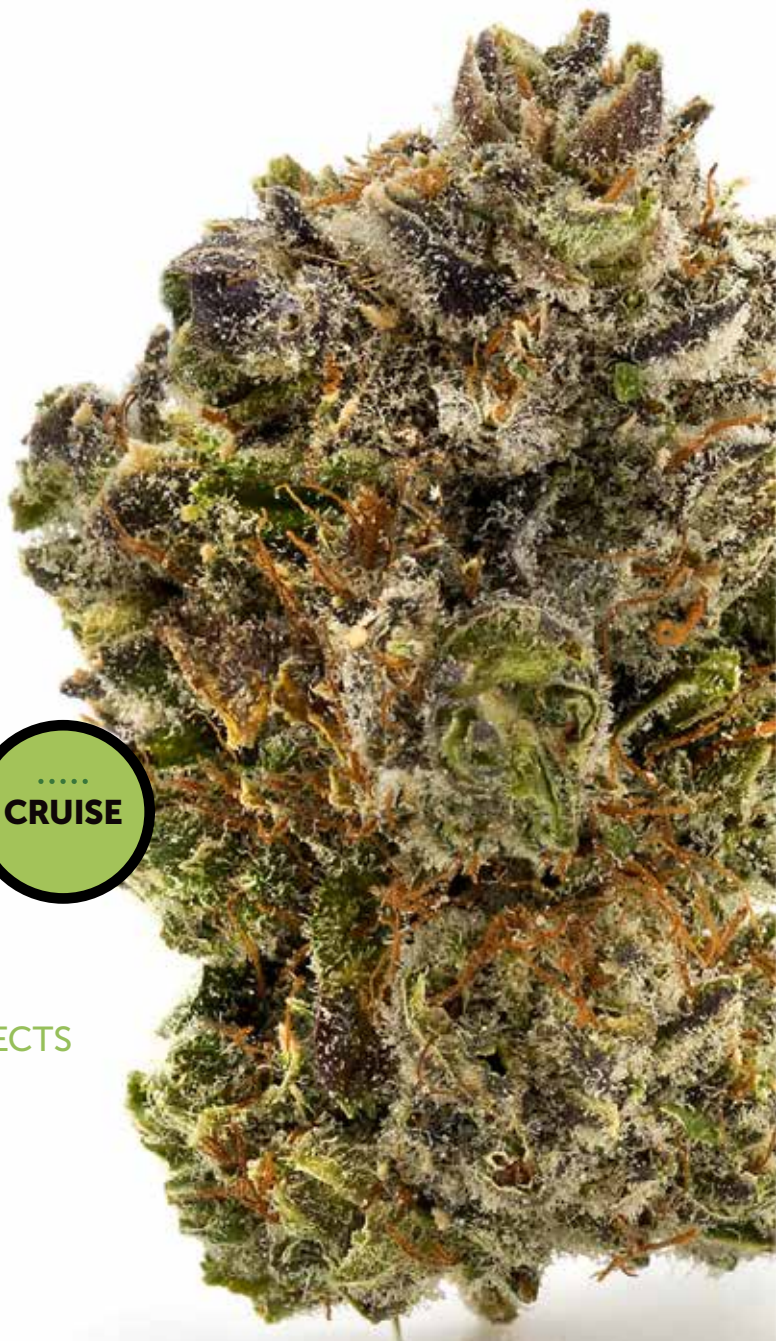
AILMENTS

- Stress
- Pain
- Insomnia
- Anxiety
- Depression

TERPENES

- Limonene
- Myrcene
- Caryophyllene

Coco Bomb Kush offers pure relaxation any time of day.



LEARN MORE AT [CALYPSOERIE.COM](https://calypsoerie.com)





Crown Royale

A magnificent strain to behold, Crown Royale can include phenotypes sprinkled with dark purple hues. Its smell is sweet like blueberries mixed with notes of pine, while its taste is more tart with a peppery kick. This strain boasts long-lasting euphoria that gradually hits every part of your body and offers deep relaxation to dull aches and pains. Best for leisure activities or drifting into a restful sleep, Crown Royale is undoubtedly a precious treasure to experience.

.....
CHILL

MORE CALMING EFFECTS

FEELINGS

- Calm
- Euphoric
- Happy
- Relaxed
- Sleepy

AILMENTS

- Anxiety
- Depression
- Insomnia
- Pain
- Stress

TERPENES

- Myrcene
- Caryophyllene
- Limonene

Crown Royale boasts long-lasting euphoria and deep relaxation.



LEARN MORE AT [CALYPSOERIE.COM](https://calypsoerie.com)





Donny Burger

Blindfolded, it's easy to mistake Donny Burger with an actual sirloin patty, topped with caramelized onions and a drizzle of lemon aioli. As a culinary combination of cheese, diesel, spice, and fruit, this strain offers a special profile for your senses along with rapid, long-lasting effects. For day or night-time use, experience euphoria in both body and mind to help ease stubborn aches and pains.

.....
CRUISE

BALANCE OF CALMING & ENERGIZING EFFECTS

FEELINGS

- Happy
- Calm
- Relaxed
- Euphoric
- Creative

AILMENTS

- Stress
- Pain
- Insomnia
- Anxiety
- Depression

TERPENES

- Myrcene
- Limonene
- Caryophyllene

Donny Burger offers a special profile along with rapid, long-lasting effects.



LEARN MORE AT [CALYPSOERIE.COM](https://calypsoerie.com)





Downing Dawg

Downing Dawg is a masterful creation that combines the calming effects of Coco Bomb Kush with the versatile, hybrid benefits of Chem Dawg. Its powerful aroma carries notes of spice and fresh herbs, while its flavor is smooth and creamy with traces of citrus. Downing Dawg delivers blissful body relaxation while keeping the mind active and clear. It's a great choice for when you need to jumpstart your morning and take on the day.



MORE ENERGIZING EFFECTS

FEELINGS

- Happy
- Energetic
- Uplifted
- Euphoric
- Focused

AILMENTS

- Stress
- Pain
- Fatigue
- Anxiety
- Depression

TERPENES

- Limonene
- Caryophyllene
- Nerolidol

Downing Dawg delivers blissful body relaxation while keeping the mind active and clear.



LEARN MORE AT [CALYPSOERIE.COM](https://calypsoerie.com)





Lambo

Lambo is a diverse hybrid strain, bred from a three-way cross of tropical Jamaican strains and a classic, indica-dominant cultivar. It emanates a savory, sweet aroma with hints of nutty pine along with flavors of vanilla and citrus. Lambo initially sparks cerebral euphoria, ushering in positive and creative thoughts to boost your mood. These uplifting effects gradually transform into full body and mind relaxation to help you drift into a restful sleep. Lambo is a wonderful option for a quiet afternoon or evening.

.....
CHILL

MORE CALMING EFFECTS

FEELINGS

- Happy
- Calm
- Relaxed
- Euphoric
- Sleepy

AILMENTS

- Stress
- Pain
- Insomnia
- Anxiety
- Depression

TERPENES

- Myrcene
- Ocimene
- Alpha-Pinene

Lambo sparks cerebral euphoria followed by powerful relaxation.



LEARN MORE AT [CALYPSOERIE.COM](https://calypsoerie.com)





Orange Krush

Reflected in its name, Orange Krush is a citrusy explosion for your senses. Its smell and taste are fresh and fruity, like a crate of sweet oranges at a farmer's market. This strain is packed with myrcene, which helps emphasize its relaxing effects. Users may experience a crescendo of euphoria in both body and mind to help release negative thoughts, pain, and other points of tension. Think of Orange Krush as a tropical escape, one that will help you ease into a tranquil, restful sleep.

.....
CHILL

MORE CALMING EFFECTS

FEELINGS

- Happy
- Calm
- Relaxed
- Sleepy
- Euphoric

AILMENTS

- Stress
- Pain
- Insomnia
- Anxiety
- Depression

TERPENES

- Myrcene
- Linalool
- Limonene

Orange Krush is packed with myrcene to help ease you into a deep sleep.



LEARN MORE AT [CALYPSOERIE.COM](https://calypsoerie.com)





Portlandia

A one-of-a-kind hybrid strain, Portlandia carries the whimsical spirit of its namesake city wherever it goes. Much like the evergreen forests that surround Portland, this strain offers an earthy, lemon-pine aroma with a similar flavor carrying hints of fresh herbs and spice. Portlandia is a versatile, well-balanced strain which produces a mild body buzz, while also keeping the mind clear and uplifted. Whether you've got a productive day ahead or a quiet afternoon, Portlandia can be your perfect go-to strain any time of day.

.....
CRUISE

BALANCE OF CALMING & ENERGIZING EFFECTS

FEELINGS

- Relaxed
- Calm
- Happy
- Euphoric
- Creative

AILMENTS

- Stress
- Pain
- Insomnia
- Anxiety
- Depression

TERPENES

- Myrcene
- Terpinolene
- Ocimene

Portlandia carries the whimsical spirit of its namesake city wherever it goes.



LEARN MORE AT [CALYPSOERIE.COM](https://calypsoerie.com)



Purple Mountain Majesty

Purple Mountain Majesty has a uniquely sweet smell and taste, mixed with notes of fresh pine. Its effects are evenly balanced, helping to provide gentle relief for both body and mind. As a balanced hybrid strain, Purple Mountain Majesty can be a wonderful choice for any time of day, whether that's starting your morning with a journal entry or watching your favorite TV show in the evening.

.....
CRUISE

BALANCE OF CALMING & ENERGIZING EFFECTS

FEELINGS

- Happy
- Calm
- Uplifted
- Euphoric
- Creative

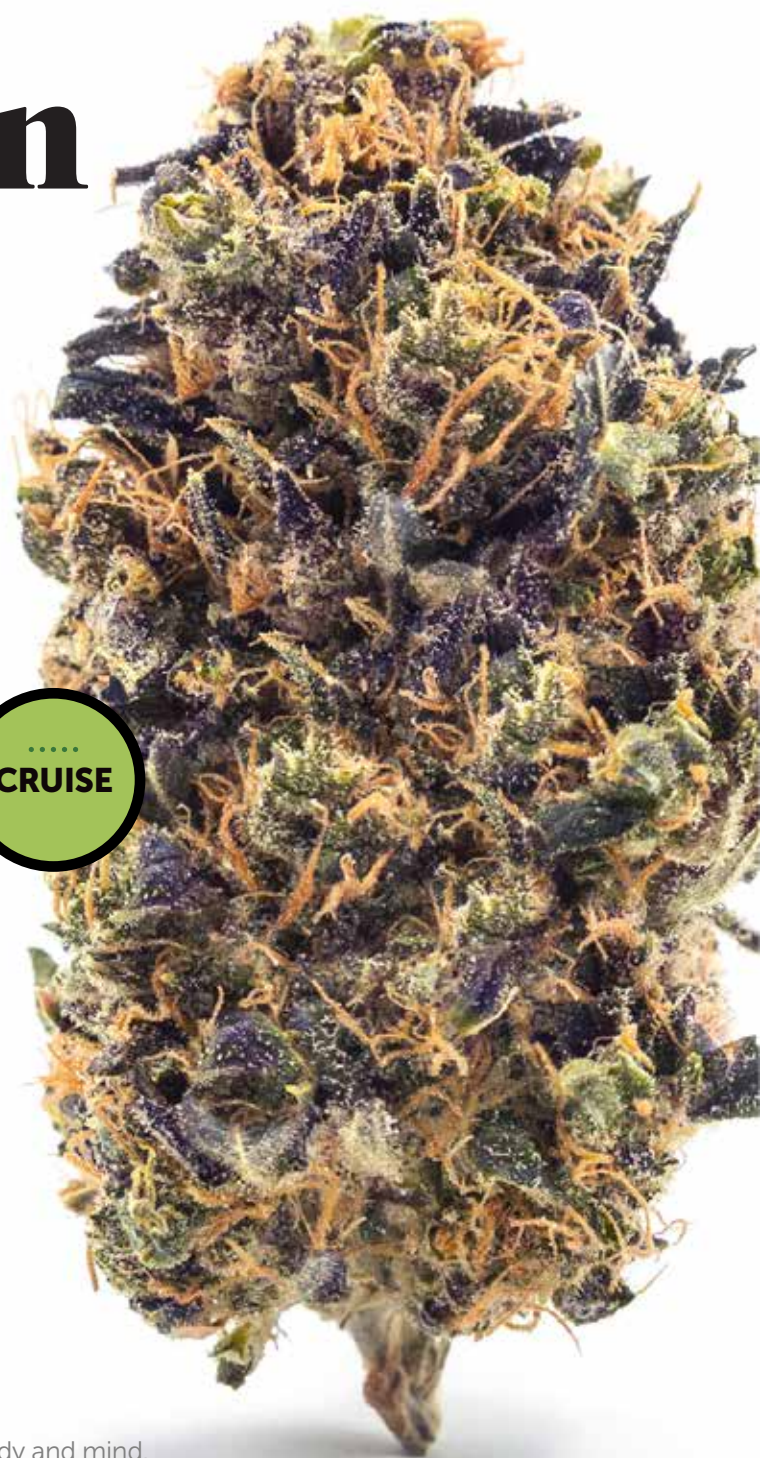
AILMENTS

- Stress
- Pain
- Insomnia
- Anxiety
- Depression

TERPENES

- Limonene
- Caryophyllene
- Myrcene

Purple Mountain Majesty offers gentle relief for both body and mind.



LEARN MORE AT [CALYPSOERIE.COM](https://calypsoerie.com)





Raspado

Berry pungent, berry flavorful, and berry potent means berry good relief okay, no more berry puns! Raspado is a hybrid strain featuring strong notes of sweet, ripe berries (particularly raspberries) mixed with lip-puckering lemons and savory vanilla, like funfetti cake. Its effects include powerful cerebral euphoria to help elevate your mood along with a subtle body buzz to help relieve minor aches and pains. One of its prominent terpenes is Nerolidol, which growing research shows may help to reduce anxiety by calming the mind and body.

.....
CRUISE

BALANCE OF CALMING & ENERGIZING EFFECTS

FEELINGS

- Calm
- Creative
- Euphoric
- Happy
- Uplifted

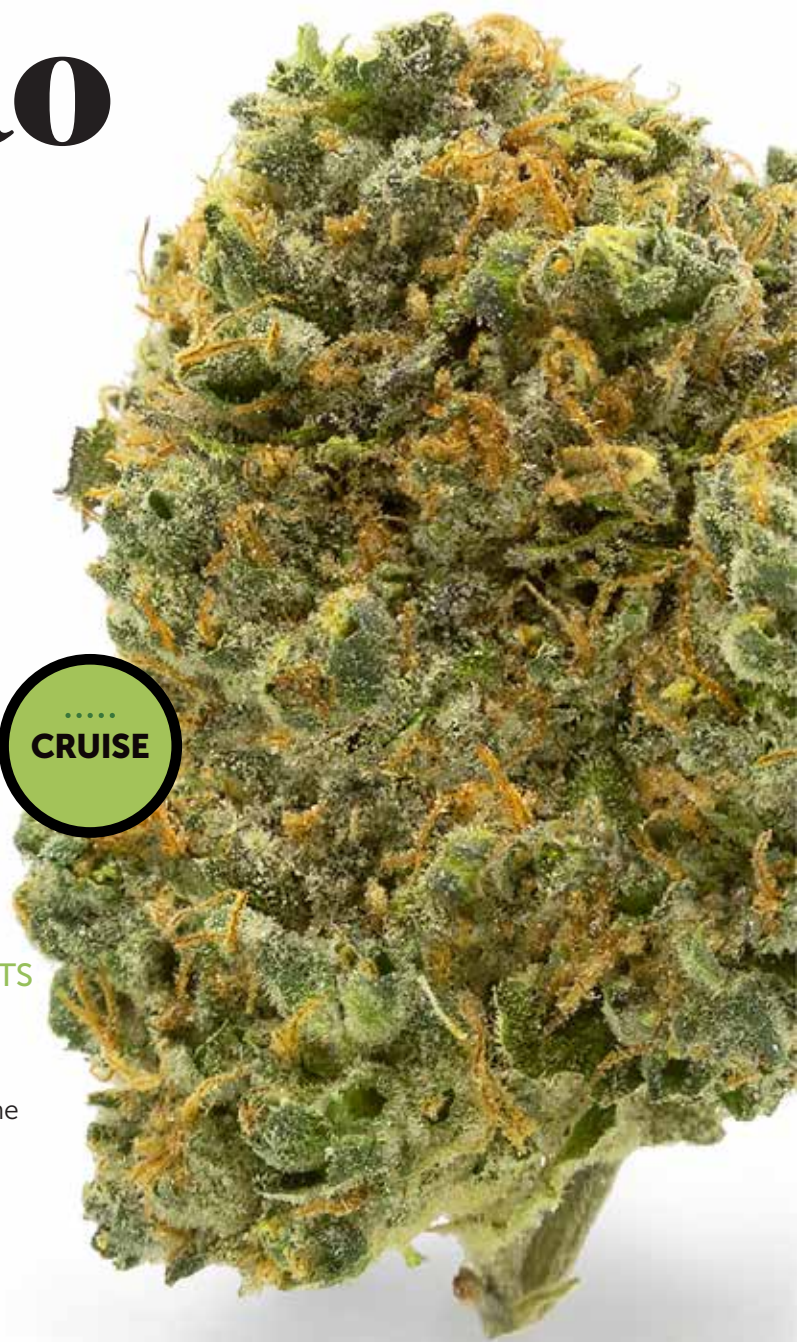
AILMENTS

- Anxiety
- Depression
- Insomnia
- Pain
- Stress

TERPENES

- Caryophyllene
- Limonene
- Nerolidol

Sweet, ripe berries mixed with lip-puckering lemons and savory vanilla



LEARN MORE AT [CALYPSOERIE.COM](https://calypsoerie.com)





Snow Cone

As its name suggests, Snow Cone grows hefty trichome covered flowers with stunning, deep purple hues. Its aroma and flavor are comparable to GSC (Girl Scout Cookies), featuring an overall sweetness like marshmallows paired with pungent lemon fuel tones. Its effects are mostly cerebral, which can help boost your mood, creativity, and energy. As a potent hybrid strain, Snow Cone is the perfect choice for relief anytime and anywhere.

.....
CRUISE

BALANCE OF CALMING & ENERGIZING EFFECTS

FEELINGS

- Happy
- Calm
- Relaxed
- Euphoric
- Creative

AILMENTS

- Stress
- Pain
- Insomnia
- Anxiety
- Depression

TERPENES

- Limonene
- Myrcene
- Caryophyllene

Snow Cone can help boost your mood, creativity, and energy. Multiple phenotypes available.



LEARN MORE AT [CALYPSOERIE.COM](https://calypsoerie.com)





Sour Diesel

Our Sour Diesel has the same pungent aroma and zesty citrus flavor as the traditional cultivar, however, its effects are not so similar. Based on its terpene profile as well as anecdotal evidence, patients should expect a more calming experience. Its unique effects stimulate a quiet and carefree state-of-mind that helps to release negativity and tension. It can be a great choice for when you want to slow things down, unplug, and gently ease into the evening.

.....
CHILL

MORE CALMING EFFECTS

FEELINGS

- Relaxed
- Sleepy
- Calm
- Happy
- Euphoric

AILMENTS

- Stress
- Pain
- Insomnia
- Anxiety
- Depression

TERPENES

- Myrcene
- Caryophyllene
- Limonene

Sour Diesel's effects activate quickly, stimulating a calm and carefree state-of-mind.



LEARN MORE AT [CALYPSOERIE.COM](https://calypsoerie.com)





Tahoe OG

Named after the majestic and beautiful location it was first bred, Tahoe OG has an earthy, lemon-lime profile to delight all your senses. Its effects lean towards cozy, relaxation—like a weighted blanket—paired with a head buzz to help pump up your mood and creativity. As if it were a little piece of paradise, Tahoe OG can help you feel relief day or night.

.....
CRUISE

BALANCE OF CALMING & ENERGIZING EFFECTS

FEELINGS

- Happy
- Calm
- Relaxed
- Euphoric
- Creative

AILMENTS

- Stress
- Pain
- Insomnia
- Anxiety
- Depression

TERPENES

- Myrcene
- Caryophyllene
- Limonene

A California-born favorite, Tahoe OG has an earthy, lemon-lime profile.



LEARN MORE AT [CALYPSOERIE.COM](https://calypsoerie.com)





White Widow

One of the most popular strains in the world, White Widow is an exquisitely balanced hybrid that is perfect for an active lifestyle. Its pungent scent carries hints of fermented fruit while its flavor is mild with notes of flowers, spice, and bright citrus. This strain is well-known for its upbeat, mood-enhancing effect as well as a mild body relaxation. These effects can make it a great fit for days when you need to be productive and engaged.

.....
CRUISE

BALANCE OF CALMING & ENERGIZING EFFECTS

FEELINGS

- Happy
- Calm
- Uplifted
- Euphoric
- Creative

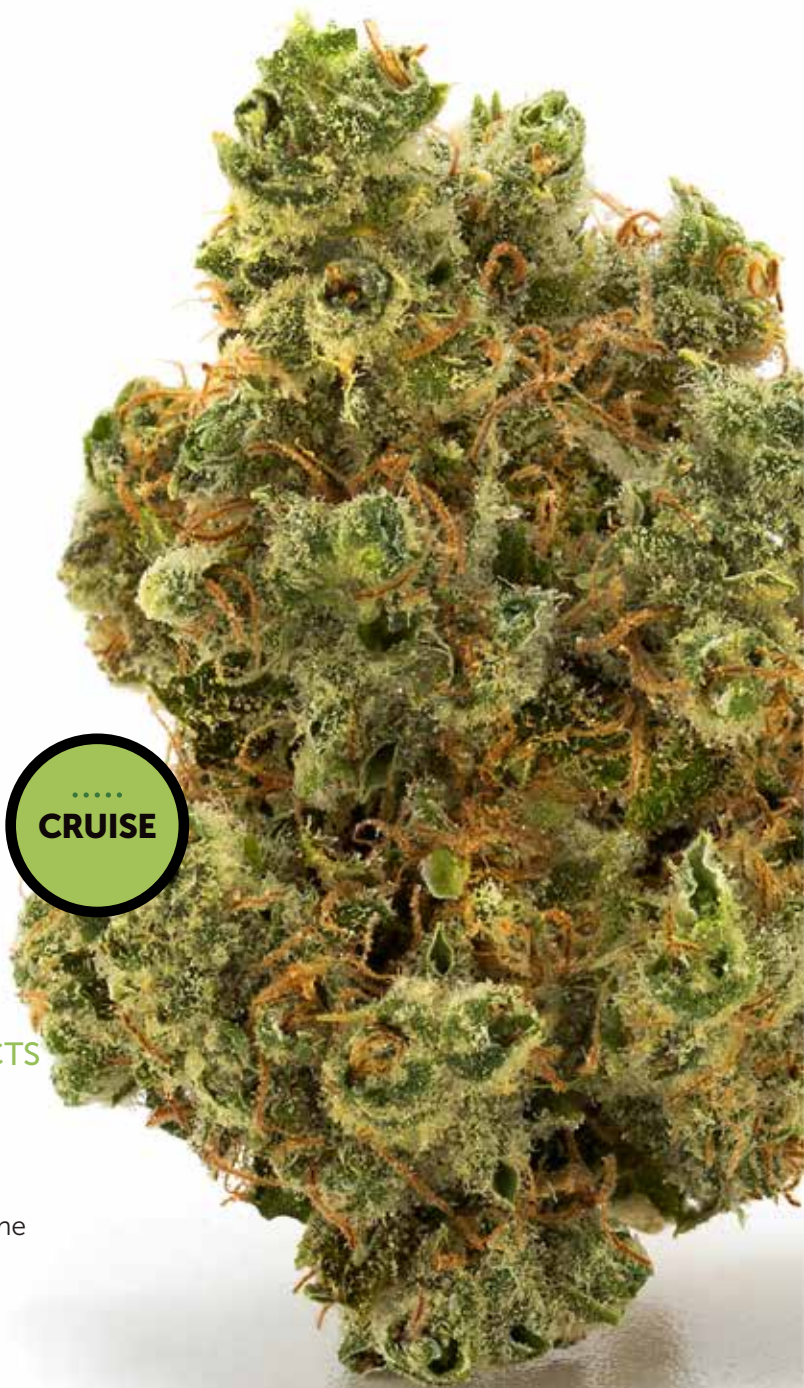
AILMENTS

- Stress
- Pain
- Insomnia
- Anxiety
- Depression

TERPENES

- Myrcene
- Caryophyllene
- Limonene

White Widow is an exquisitely balanced hybrid that is perfect for an active lifestyle.



LEARN MORE AT [CALYPSOERIE.COM](https://calypsoerie.com)

